

CE

socimed

VENTE DE CONSOMMABLES ET D'APPAREILS MÉDICAUX
Tel. +331 49 98 86 72 - socimed@socimed.com



BA.

600

Urine Analyzer



SOCIMED SARL , 93240 STAINS FRANCE

Tél.: +33149988672, +33953341938, Fax: +33(0)1 55 93 12 57

Web: <http://www.socimed.com>, E-mail: socimed@socimed.com,
socimed1@yahoo.fr

Jacky Carrel Skype : carrel14, Armel Florent Skype : chasiflag

BA. 600

Urine Analyzer

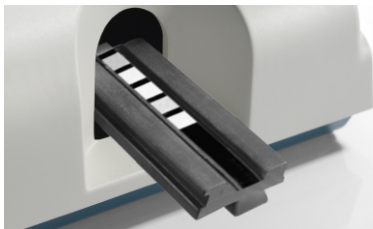


General Features

- 5-inch touch screen
- 11 testing parameters
- 100 samples/hour throughput
- Dual wavelength reflectance test method
- Auto & manual test mode
- Thermal printer, auto & manual print
- Support LIS and barcode
- Less and easy maintenance

Technical Specifications

Principle: Dual wavelength reflectance method
Wavelength: 520nm, 640nm, 660nm
Parameters: Glucose, Bilirubin, Ketone, Specific Gravity, Blood, pH, Protein, Urobilinogen, Nitrite, Leukocyte, Vitamin C
Throughput: 100 samples/hour
Sample type: Urine
Test mode: Auto, manual
Waiting time: 15-40s
Display: 5-inch touch screen
Memory: 2,000 results storage
Language: English
Strip: Original strip, 100 strips per bottle
Report format: Semi-quantitative and qualitative
Coincidence rate: $\geq 90\%$
Power supply: AC 100-240V 50/60Hz
Working temperature: 10-30°C
Atmospheric pressure: 86.0kPa-106.0kPa
Relative humidity: $\leq 70\%$
Size: 360mm×225mm×160mm
Net weight: 2.5kg



SOCIM ED SARL , 93240 STAINS FRANCE
Tél.: +33149988672, +33953341938, Fax: +33(0)1 55 93 12 57
Web: <http://www.socimed.com>, E-mail: socimed@socimed.com ,
socimed1@yahoo.fr
Jacky Carrel Skype : carrel14, Arm el Florent Skype : chasiflag